



# Possibility Business In Action

AMF designs the “ Flow “ between people and corporate (or spatial) environments. We provide fundamental building maintenance solutions that safeguard everyday stability, enhance workplace efficiency, and improve quality of life by creating smooth interactions for those within the space.



Perfect Total Solution Company

# Driving Possibility, Together

02

## AMF transforms the operations of leading companies into opportunities

Even amidst the tides of change, AMANFLOW pursues relentless innovation and growth, responding to the demands of the era with steadfast standards and insightful solutions.

With a deep understanding of our clients' diverse business sectors and based on precise diagnostics, we place professionally trained specialists in the right positions at the heart of each site, delivering total outsourcing solutions that cover every aspect of building operations both inside and out.

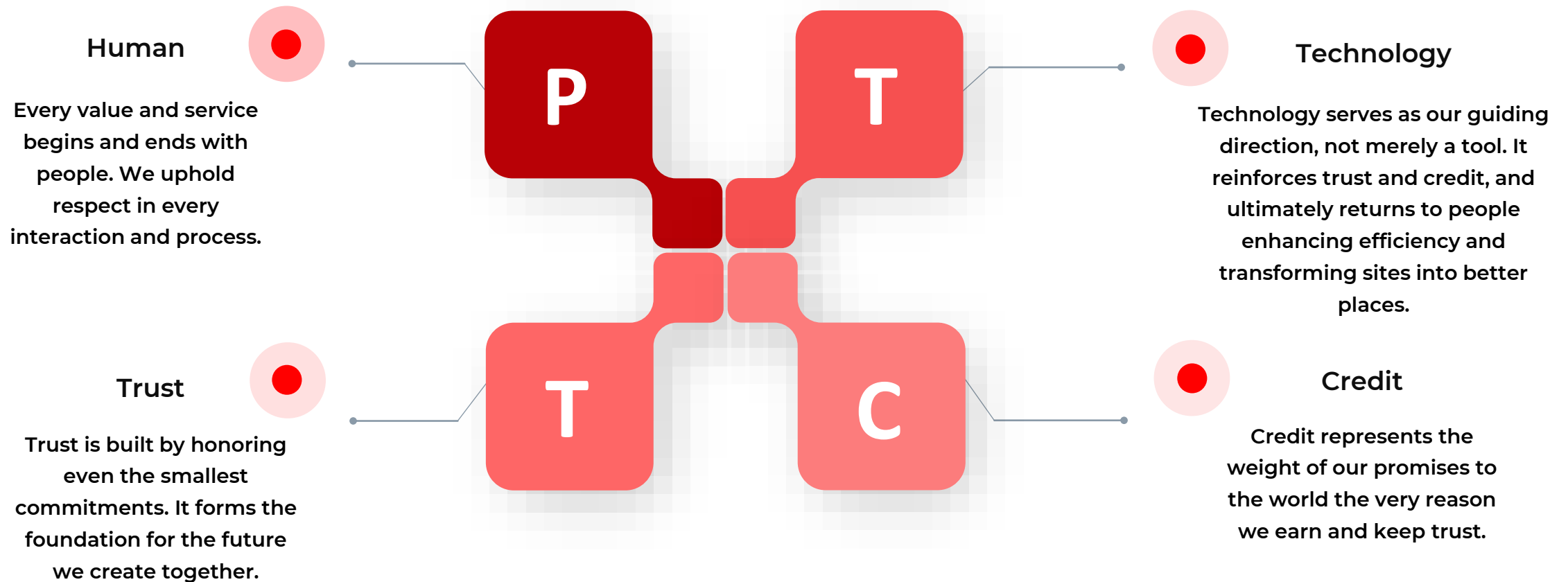
Our smart, streamlined systems help create measurable performance at client sites and contribute to building sustainable operational environments.

Drawing on our accumulated operational expertise and refined solution quality, we go beyond mere satisfaction to deliver a compelling value that resonates.



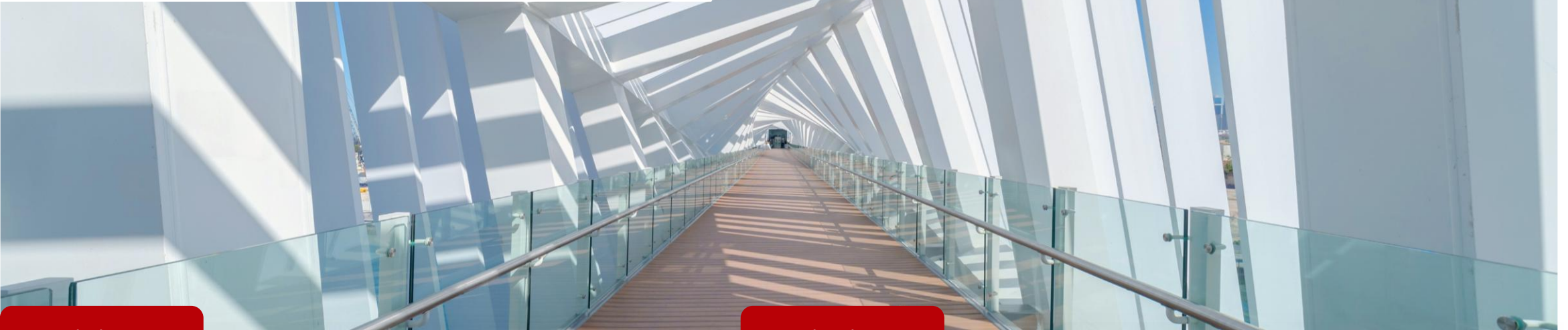
# Value Proposition

A human-centric outsourcing company that seamlessly connects people and facilities,  
built on the four pillars of People, Trust, Credit, and Technology.



# Vision and Mission

## 비전 & 미션



### Vision:

To evolve into a smart outsourcing platform where people, technology, and systems are organically connected — becoming a trusted partner that supports domestic and global clients in creating sustainable value and enhancing operational competitiveness.

### Mission:

1. Enhance efficiency and quality with tailored workforce and facility solution.
2. Maintain consistent, responsive service via standardized processes.
3. Innovate with lightweight robotics and smart technologies.
4. Foster lasting partnership through transparency and results.

# Simple Organizational Chart

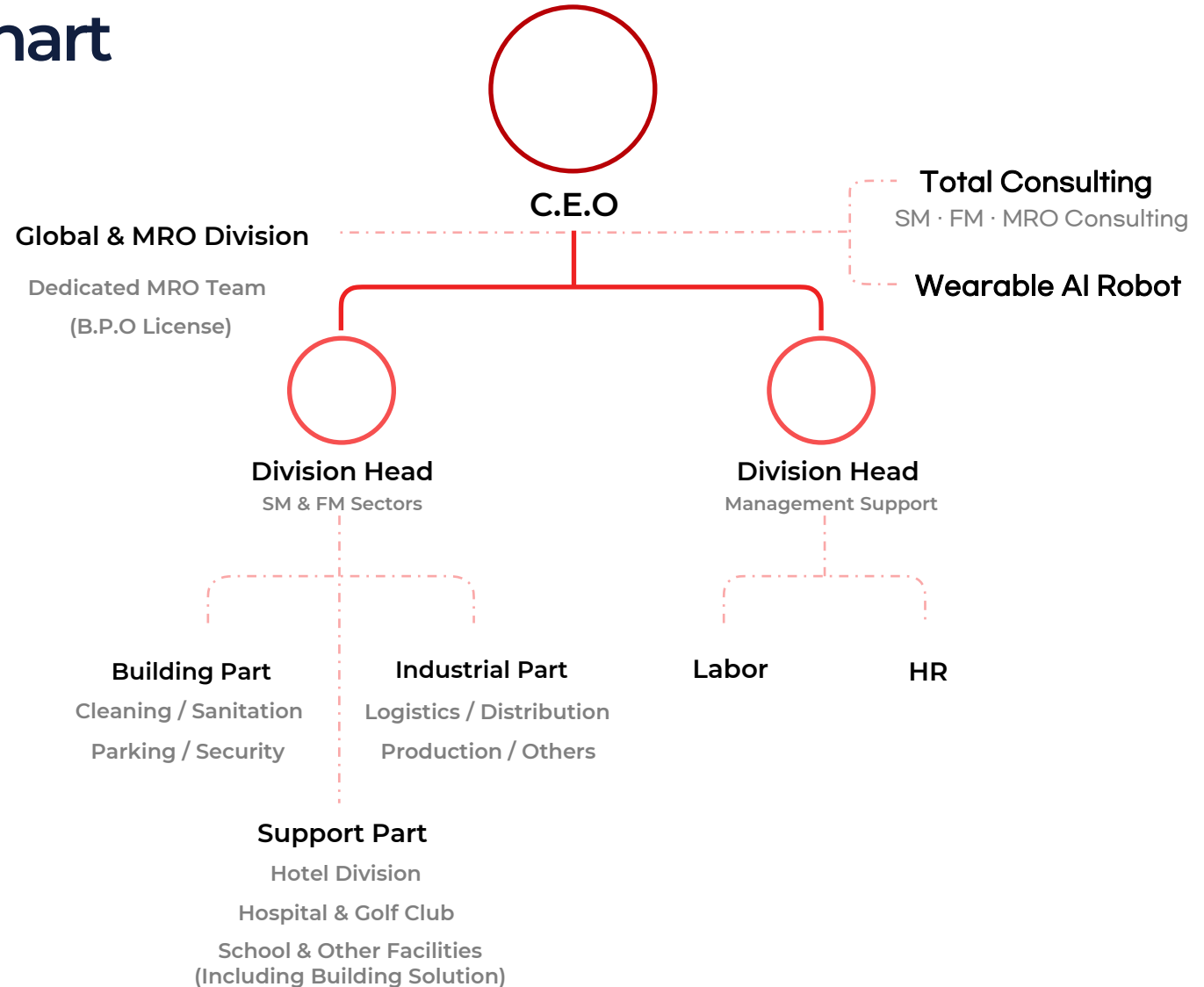
## 간략 조직도

AMANFLOW Inc. operates with a streamlined organizational structure, enabling quick decision-making and execution.

Clear separation of roles and responsibilities minimizes redundancy, enhances on-site responsiveness, and ensures consistent service quality.

We prioritize performance over complex procedures, aligning the entire organization in a unified and coordinated direction.

Amanflow Inc.



# WHY? 도급(Outsourcing)?

## Budget Flexibility & Cost Savings

Operate with the necessary workforce to ensure stable operations and significantly reduce unnecessary costs.

## Verified Personnel & Systematic Service

Deploy experienced staff, maintain consistent quality through standardized training and operational manuals.

## Risk & Legal Stability

Minimize related risks while ensuring legal compliance and operational safety.

## Core Focus & Productivity Boost

By outsourcing non-core tasks, companies can focus on strategic priorities, boosting overall productivity and employee satisfaction.

## Making Flow of Trust and Perfect

AMF delivers a “Perfect Trust” through people, technology, and experience, enabling clients to operate with confidence while enhancing efficiency, competitiveness, and long-term success.



# Our Services – SM · FM

Soft Management · Facility Management

SM 은 '인력 중심' 솔루션이며, FM 은 '기계, 설비, 기술' 관리 중심 입니다.



Partner with AMF to achieve not just temporary results, but sustainable, impactful outcomes.



## 미화 환경관리 & 소독(방역) 유지관리

Cleaning Maintenance.

AMF provides tailored maintenance solutions for cleaning and disinfection, aligned with hygiene standards and operational requirements.



## 주차 · 교통 안내

Parking Solution

We deliver integrated parking and traffic management solutions, designed with customer flow and safety in mind.



## 경비 · 보안

Security Solution

Comprehensive security solutions to safeguard both personnel and facilities.



## 지원서비스 · 산업 · 엔지니어링 (FM)

Support · Industry · Engineering Solution

Operational support, industrial and engineering solutions designed to maintain workflow continuity, grounded in technical expertise.

# Our Services – M·R·O

Maintenance · Repair · Operations

다양한 업종의 안정적 운영을 위한 설비 · 자재 중심의 운영관리 솔루션, 자재 공급부터 수리 · 보수까지 지원합니다.



## 설비 점검 · 유지보수

Maintenance · Repair

Regular inspections, repairs, and replacements for key facilities and equipment, including electrical, mechanical, HVAC, and piping systems, ensuring uninterrupted and safe operations.



## 자재 · 소모품 공급 관리

Operations Supply Support

Timely supply and efficient management of essential operational items tools, equipment, filters, cleaning agents, and disinfection materials to prevent shortages and maintain workflow continuity.



## 장비 · 시설 운영지원

On-site Equipment · Facility Support

Set-up, upkeep, and operational assistance for necessary on-site equipment, including safety support and auxiliary tasks, ensuring smooth, uninterrupted operations.



## 특수 분야 맞춤형 MRO 컨설팅

Customized Industrial MRO solution

Tailored consulting and solutions for specialized industries, integrating operational support with technical and engineering expertise.



# Soft · Facility Management

Clean, Sanitation, Parking, Security



Sanitation



Security



Parking Manage



Cleaning



Hotel Cleaning

## AMF Facility Management Outsourcing:

"AMF provides tailored facility management solutions cleaning, sanitation, parking, and security ensuring safe, efficient, and high-quality operations."

## Solution Benefits:

- Making safe and efficient work environment.
- Provide optimal, Comfortable spaces for employees and customers.
- High quality Image
- Save facility maintenance costs

# Soft · Facility Management

Support Culture, Industrial,  
Logistics



## AMF Support Outsourcing :

At AMF, we leverage our deep understanding of diverse operational environments to deliver tailored support services.

Our solutions optimize operational efficiency and ensure smooth workflows while enabling customers to focus on their core business.

## Solution Benefits :

- Deliver exceptional customer experiences
- Optimize operations
- Boost productivity
- Ensure sustainable growth

# Soft · Facility Management & Industry · MRO · Consulting

SM · FM · MRO · Total , Customized Consulting

You can Check more info  
From AMF WEB-SITE

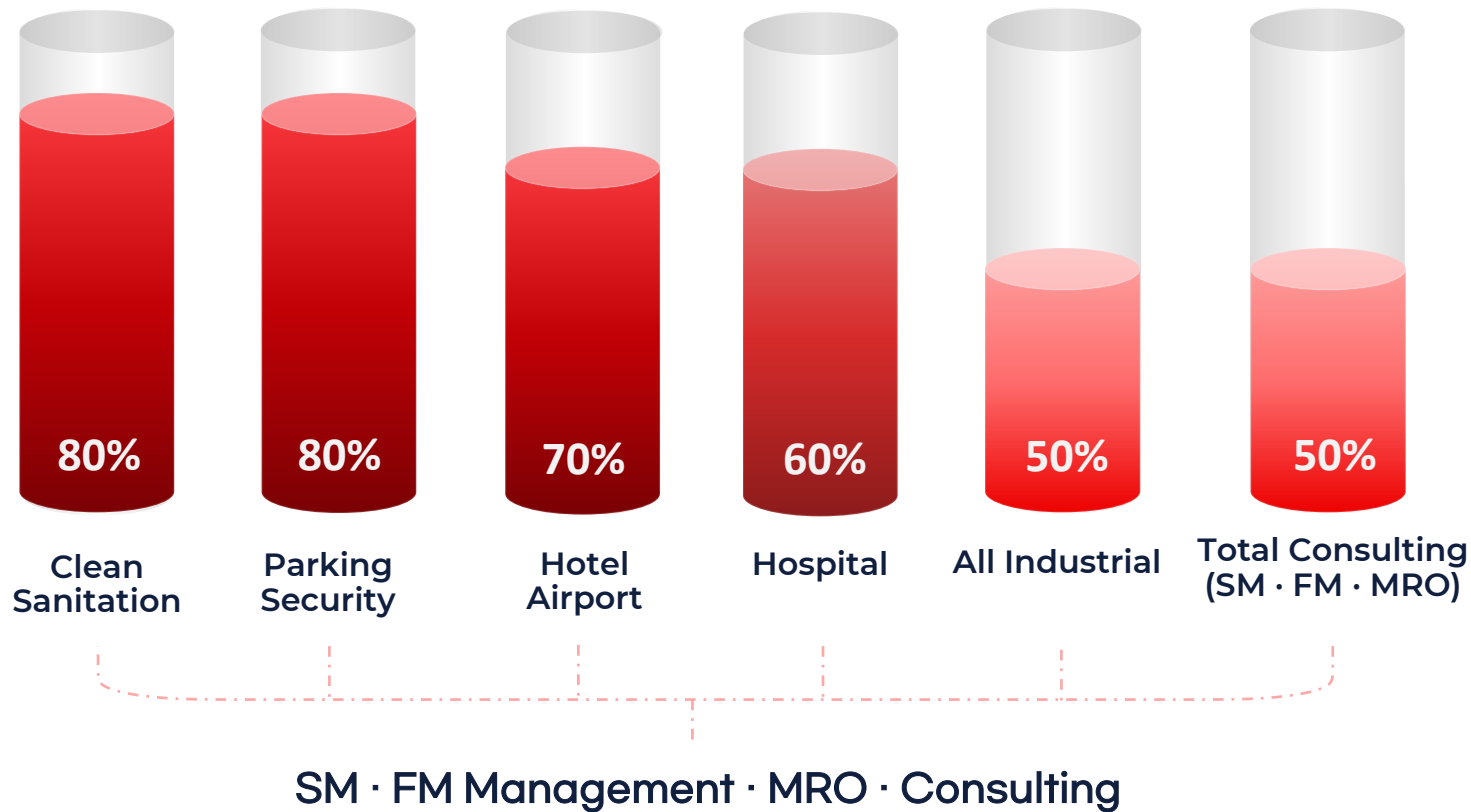


## AMF Outsourcing Consulting

AMF's outsourcing consulting service analyzes your site's operational structure and environment to design optimal, customized, and efficient operational models.

Through on-site diagnostics and tailored consulting, we enhance workforce quality, improve service performance, and streamline processes. This enables stable, efficient operations and creates an environment where customer satisfaction and organizational goals align.

## Focus Sectors 사업 집중도

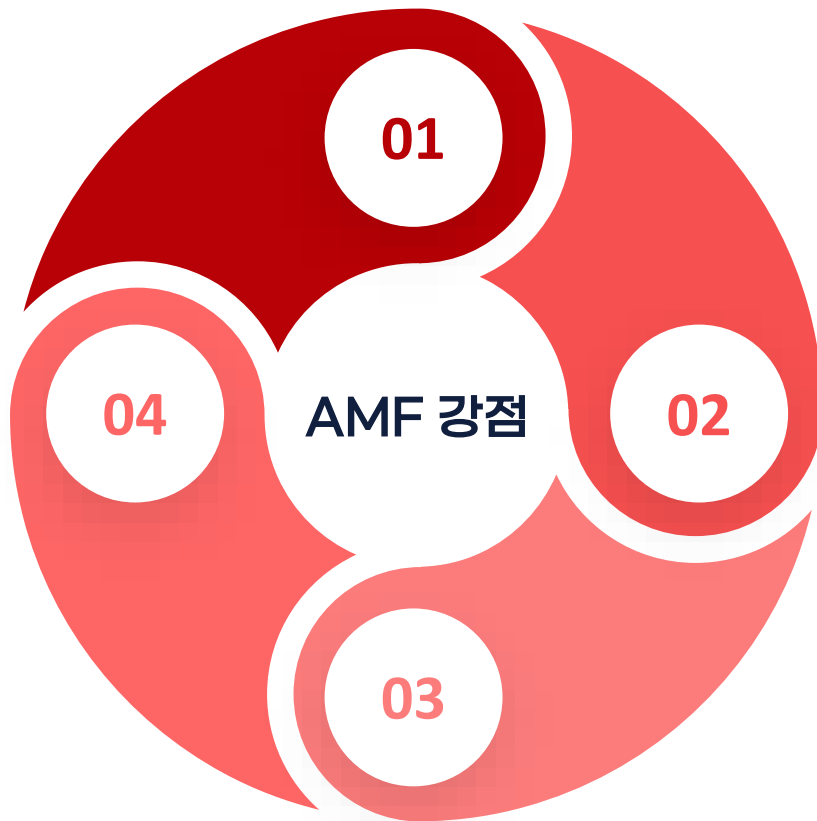


## Detail Sectors Focus on

This chart represents the proportion of operational focus allocated to each business sector in which our company is actively engaged.



# AMF Strength 강점



## Agile Decision Making

A streamlined structure enables swift, effective responses to diverse client needs.



## Technology Driven Efficiency

Automated systems and advanced R&D ensure safe, stable, and optimized operations.



## Tailored Operations

Customized strategies designed to fit each site's unique conditions.

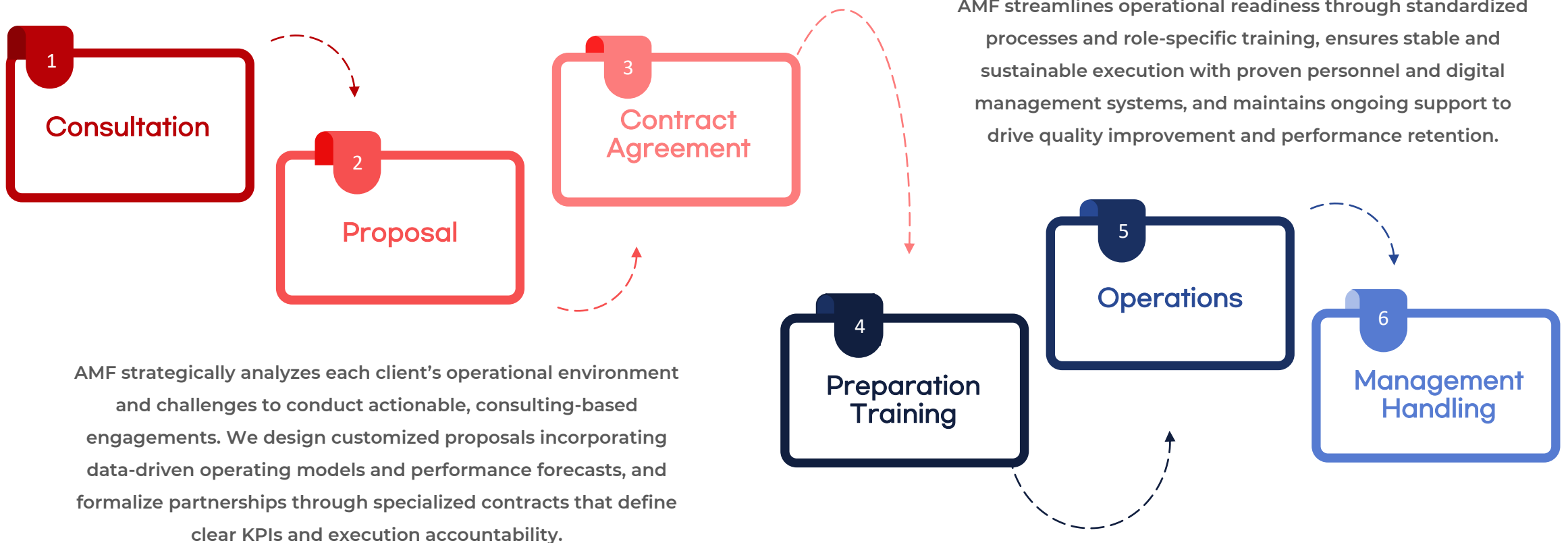


## Robust Infrastructure

ISO9001, ISO14001, ISO45001. all ISO-certified processes deliver sustainable and transparent management.

# Process 진행절차

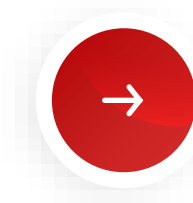
Redesigning structures boosts efficiency and flexibility. AMF partners in driving this transformation.



# Contact Information



아만플로우(주)  
AMANFLOW Inc. / AMF



[amf@amanflow.com](mailto:amf@amanflow.com)



# Thank You

**Presented By AMF Inc.**  
**아만플로우(주)**

· Copyright©2025 Designed by AMANFLOW Inc. / 아만플로우(주). All rights reserved.  
· 본 자료(파일)에 대한 저작권 및 지식재산권은 아만플로우 주식회사에 있으며, 저작권법 및 관련 법률에 따라 보호받습니다. 무단 복제, 배포, 전송, 전시, 수정, 2차 저작물 작성 등 일체의 무단 사용을 금합니다. 위반 시 민·형사상의 책임을 질 수 있습니다